

# Human LILRB2/CD85d/ILT4 Protein

Cat. No. LIL-HM2B2

## Description

<b>Source</b>	Recombinant Human LILRB2/CD85d/ILT4 Protein is expressed from HEK293 with hFc tag at the C-Terminus. It contains Gln22-His458.
<b>Accession</b>	Q8N423-1
<b>Molecular Weight</b>	The protein has a predicted MW of 74.1 kDa. Due to glycosylation, the protein migrates to 80-110 kDa based on Bis-Tris PAGE result.
<b>Endotoxin</b>	Less than 1EU per $\mu\text{g}$ by the LAL method.
<b>Purity</b>	> 95% as determined by Bis-Tris PAGE > 95% as determined by SEC-HPLC

## Formulation and Storage

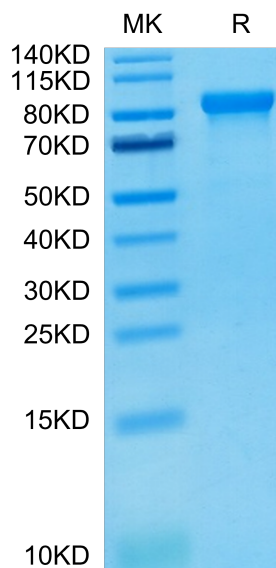
<b>Formulation</b>	Lyophilized from 0.22 $\mu\text{m}$ filtered solution in PBS (pH 7.4). Normally 8% trehalose is added as protectant before lyophilization.
<b>Reconstitution</b>	Centrifuge the tube before opening. Reconstituting to a concentration more than 100 $\mu\text{g}/\text{ml}$ is recommended. Dissolve the lyophilized protein in distilled water.
<b>Storage</b>	-20 to -80°C for 12 months as supplied from date of receipt. -80°C for 3 months after reconstitution. Recommend to aliquot the protein into smaller quantities for optimal storage. Please minimize freeze-thaw cycles.

## Background

The immunoglobulin-like transcript (ILT) comprise a family of activating and inhibitory type immunoreceptors whose genes are located in the same locus that encodes killer cell Ig-like receptors (KIR). ILT4, also known as LIR-2 and LILRB2, is a type I transmembrane protein expressed primarily on monocytes and dendritic cells (DC). LILRB2 is a receptor for class I MHC antigens. Recognizes a broad spectrum of HLA-A, HLA-B, HLA-C, HLA-G and HLA-F alleles.

## Assay Data

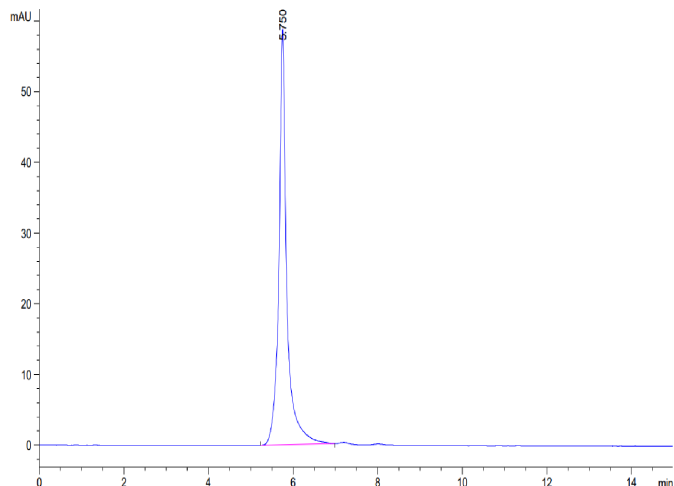
### Bis-Tris PAGE



Human LILRB2 on Bis-Tris PAGE under reduced condition. The purity is greater than 95%.

### SEC-HPLC

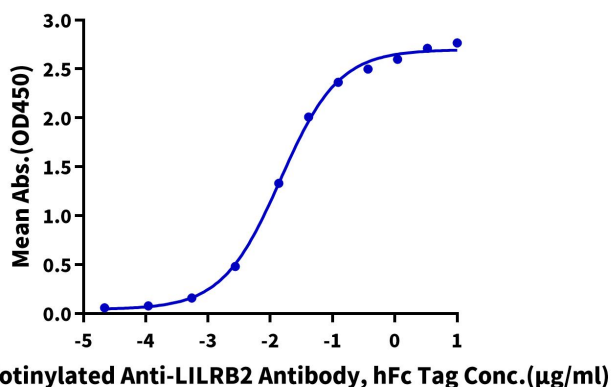
Assay Data



The purity of Human LILRB2 is greater than 95% as determined by SEC-HPLC.

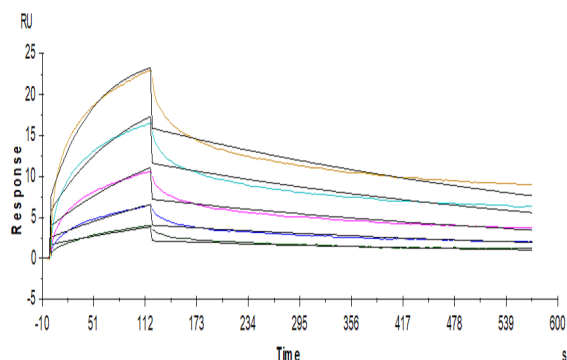
ELISA Data

**Human LILRB2, hFc Tag ELISA**  
0.1µg Human LILRB2, hFc Tag Per Well



Immobilized Human LILRB2, hFc Tag at 1µg/ml (100µl/well) on the plate. Dose response curve for Biotinylated Anti-LILRB2 Antibody, hFc Tag with the EC<sub>50</sub> of 14.6ng/ml determined by ELISA (QC Test).

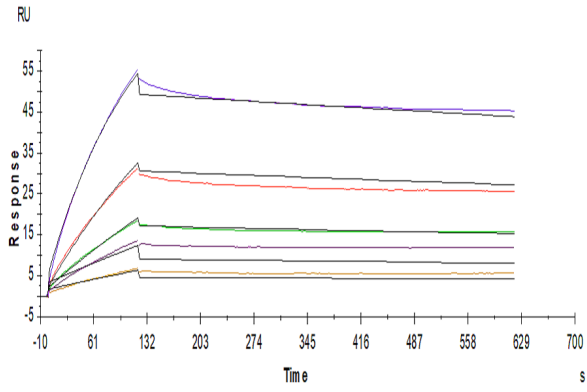
SPR Data



Human LILRB2, hFc tag captured on Protein A Chip can bind Human HLA-G Tetramer, His Tag with an affinity constant of 9.20nM as determined in SPR assay (Biacore T200).

SPR Data

Assay Data



Human LILRB2, hFc Tag captured on Protein A chip, can bind Human ANGPTL2, His Tag with an affinity constant of 0.14 $\mu$ M as determined in a SPR assay (Biacore T200).